



Easy Angle™

Drill Attachment

- 10mm keyless chuck
- Ideal for tight corners or angles
- Suitable for drilling or screwing
- Drilling "around the corner" or between studs is no longer a challenge with this innovative tool!
- Allows for easy drilling of holes or driving fasteners where access is limited, narrow or obstructed
- Features large diameter 3/8" keyless chuck for fast and easy bit change
- Accepts Hex and Round shank drills in Right hand or Left hand rotation
- The 3/8" Hex shank will ensure no slipping when attached directly into any portable power drill or driver
- Rigid tool body construction is perfectly fitted with permanently lubricated gears for long lifetime and durability



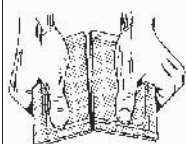
Tool no.
WPD90

DICUT

Also known as Double Tip Scribe, this unique tool is ideal for marking and scoring roof, wall and floor slates and tiles.

Tool no.	Description
DICUT NO. 1	Two identical knives score plastic laminates, asbestos-cement, vinyl etc.

Tool no.	Description
DICUT NO. 2	Two different knives enable cutting of various materials: Blade A for laminates asbestos-cement etc. Blade B for glass, tiles etc.



Hold the straight edge alongside the score, grip the free end and lift to snap it. Tiles should be soaked with water before scoring. They are broken downwards with scored line facing up.



If required, the carbide tips can be resharpened on a diamond wheel.



Score with aid of a straight-edge; the blade should be held at an angle of about 30° to the scored surface.

Sanding Belts, Aluminum Oxide with "butt" Joint.

Tool no.	Description
SB32424	SANDING BELT 3" x 24" x 24 GRIT
SB32436	SANDING BELT 3" x 24" x 36 GRIT
SB32450	SANDING BELT 3" x 24" x 50 GRIT
SB32460	SANDING BELT 3" x 24" x 60 GRIT
SB32480	SANDING BELT 3" x 24" x 80 GRIT
SB324100	SANDING BELT 3" x 24" x 100 GRIT
SB324120	SANDING BELT 3" x 24" x 120 GRIT
SB324150	SANDING BELT 3" x 24" x 150 GRIT

SB42424	SANDING BELT 4" x 24" x 24 GRIT
SB42436	SANDING BELT 4" x 24" x 36 GRIT
SB42450	SANDING BELT 4" x 24" x 50 GRIT
SB42460	SANDING BELT 4" x 24" x 60 GRIT
SB42480	SANDING BELT 4" x 24" x 80 GRIT
SB424100	SANDING BELT 4" x 24" x 100 GRIT
SB424120	SANDING BELT 4" x 24" x 120 GRIT
SB424150	SANDING BELT 4" x 24" x 150 GRIT



- Features:**
- Butt Joint
 - Semi open coat, Aluminum Oxide
 - X-weight cloth, 100% cotton
 - Reinforced Tape (imported from Germany)
 - Strong Resin Bond



Double Edge Trimmer



Category

- For easy trimming of two edges at the same time.
- Wood thickness ranges from 1/2" to 1".
- Spring loaded, requires no adjustments.
- Economical.

Tool no.

DET



Laminate End Trimmer

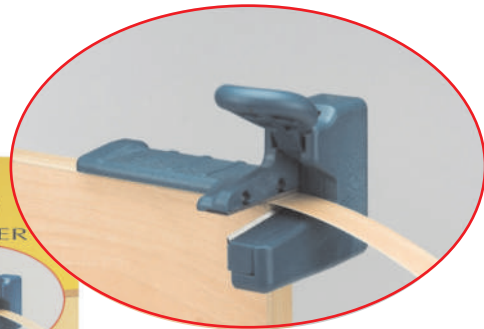


Category

A practical tool used for trimming the ends of Melamine or Veneer. The end result is a clean cut, flush with the panel. Easily positioned... just set the trimmer on the panel edge and press the handle down. Suitable for trimming of edging up to 0.5mm thickness. Cutters may be re-sharpened.

Tool no.

LET



DET and LET Trimmer Set



Category

Tool no.

TRIM-SET





Shearpro™ Multi-Purpose Hand Cutter


Dealer Net Price
in effect

A heavy duty, multi-purpose, hand cutter for cutting & trimming of wood, plastic, rubber, etc. Have you ever installed quarter-round floor trim, electric or video cable, cut a garden hose or pruned a tree? Well, if you've answered yes, you will appreciate this wonderful tool. By changing anvils to fit your needs, you can easily encounter tough jobs with ease. It is a "Must Have" tool around the house for all odd cutting jobs that do not require the use of a saw, but can't be done with ordinary shears. Works well with soft woods up to 3/4" in size.

Advantages:

- Heavy duty steel body: for long lasting use on tough materials.
- Super sharp forged steel blade: can be resharpened or replaced.
- Five anvils: for cutting flat and round materials.
- Special coated handles: for Non Slip grip.
- ABS attache case: for easy storage and security.

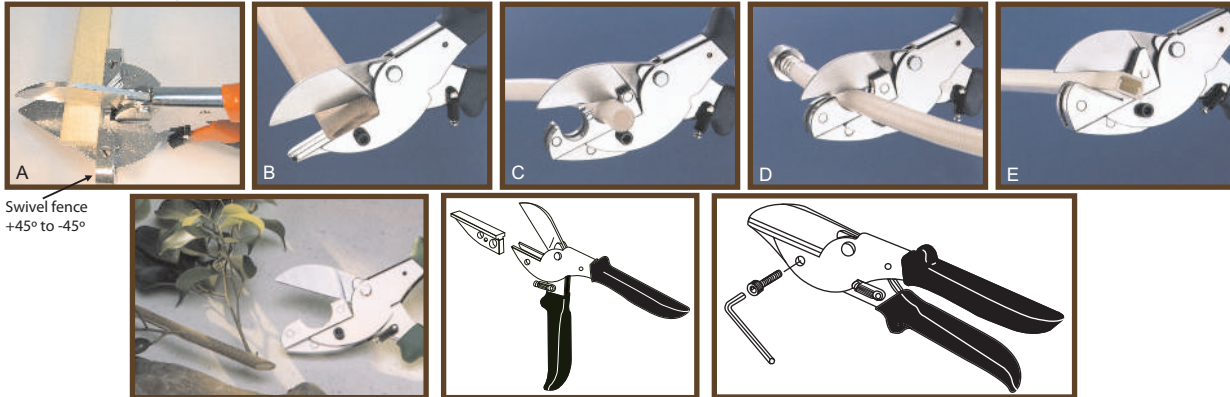
Tool no.	Description
SHEARPRO	Multi-purpose cutter with 5 anvils
SHEARPRO-K	Forged Steel replacement blade

Each set contains:

One heavy duty cutter with forged steel blade and five interchangeable anvils:

- A.** Swivel Fence mitre anvil for multiple angle mitre cuts on a variety of materials.
- B.** Flat anvil for flat material cutting (mounted to shears).
- C.** Double radius anvil for tubing. Hose and round stock of 5/8" & 3/4" diameter.
- D.** Single radius anvil for tubing. Hose and round stock of 1" diameter.
- E.** Right angle anvil for 90° angular stock such as a square & rectangular tubing, trim & moldings.

One 5/32" hex key and a molded attache case.



Swivel fence
+45° to -45°

Multi-Purpose Hand Cutter

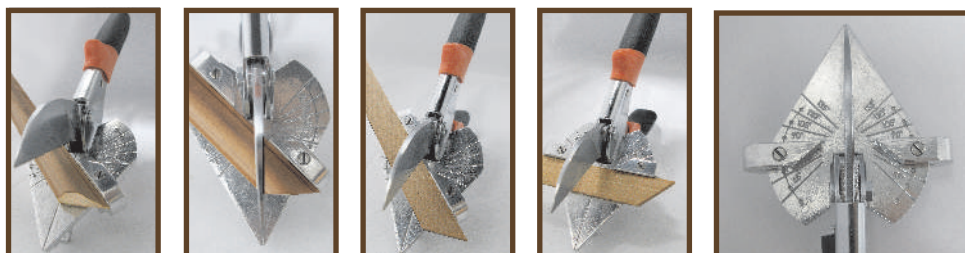

Dealer Net Price
in effect

Tool no.	Description
SHEAR-1	Multi-purpose cutter

Advantages:

- Heavy duty steel body: for long lasting use on tough materials.
- Super sharp forged steel blade: can be resharpened or replaced.
- Special coated handles: for Non Slip grip
- Swivel Fence + 45° to - 45°

Shear-1





Wood Biscuits



Dimar's joiner biscuits are made from high quality Beechwood. Beech is exceptionally strong and stiff; it is similar to red oak. Beech has the highest shock resistance of any native wood. The biscuits are strong & consistent in thickness and shape. Measuring 5/32" in thickness, they fit well into slots made by all biscuit cutters and router machines. Packaged in nylon bags to maintain moisture content and dimensional stability.

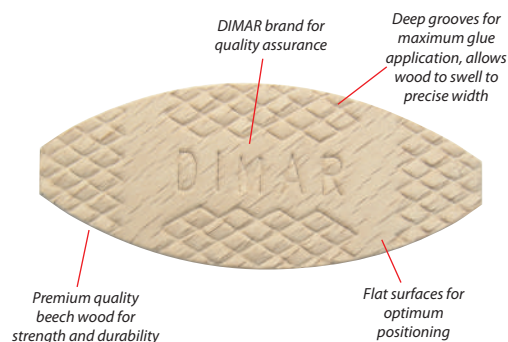
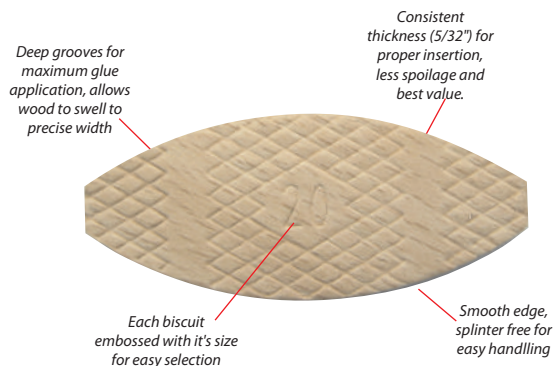
Tool no.	Size	Description
BJ0	# 0 (46mm x 15mm x 4mm)	# 0 Biscuit, 1000 pcs. per box
BJ10	#10 (54mm x 19mm x 4mm)	#10 Biscuit, 1000 pcs. per box
BJ20	#20 (57mm x 24mm x 4mm)	#20 Biscuit, 1000 pcs. per box
BJMIX	MIXED	Mixed Biscuits, 1000 pcs. per box # 0, 250 pcs.; #10, 500 pcs.; #20, 250 pcs.



Wood Biscuits in Ziplock Bags*

Tool no.	Size	Description
*BJ0-100	# 0 (46mm x 15mm x 4mm)	# 0 Biscuit, 100 pcs. per bag
*BJ10-100	#10 (54mm x 19mm x 4mm)	#10 Biscuit, 100 pcs. per bag
*BJ20-100	#20 (57mm x 24mm x 4mm)	#20 Biscuit, 100 pcs. per bag

*Minimum order: 10 bags per size



Fluted Birchwood Dowel Pins



Made in Europe from premium Birchwood, the Dowel Pin is a high quality product which is suitable for hand fed and/or automatic feeding Dowel machines.

- Premium birchwood for High Shear strength
- Exact and consistent diameter, +/-0.005" maximum tolerance for precise fit every time
- Deep Grooves for high glue retention
- Consistent moisture (6% to 8%) for minimal diameter change

Supplied in bags of 250 pieces

Tool no.	Description
WD14114-250	Wood Dowel 1/4" x 1 1/4"
WD14112-250	Wood Dowel 1/4" x 1 1/2"
WD516112-250	Wood Dowel 5/16" x 1 1/2"
WD38112-250	Wood Dowel 3/8" x 1 1/2"
WD38134-250	Wood Dowel 3/8" x 1 3/4"



HAND TOOLS AND WOOD PRODUCTS