

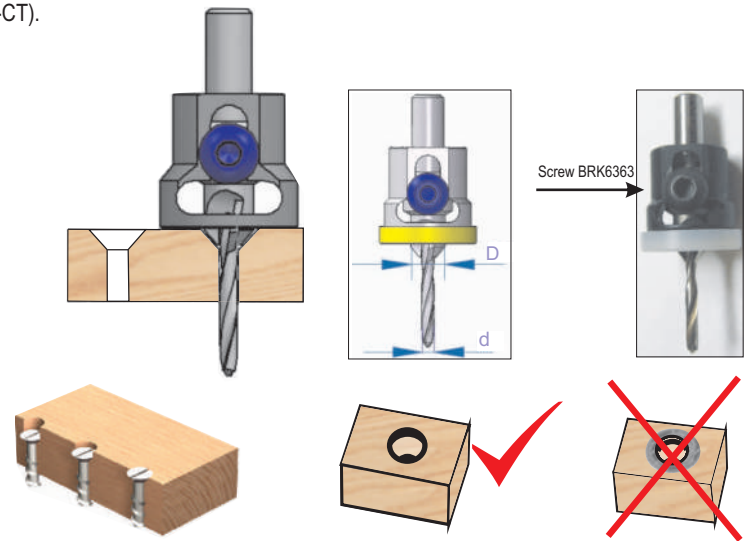
Carbide Tipped Countersink with Depth-Stop

This is new design of the well-known NOVA™ Industrial Quality countersinks (similar to our 202-CT). This innovative combination of three components will make countersinking safe and precise.

- Carbide Tipped Countersink 200-CT("New")
- HSS Slow Spiral Drill
- Low Friction Depth-Stop

Complete Assembly (Countersink+Drill+Depth-Stop)

Tool no.	D	d	Shank	Category
200-CT-2.5A	8.5mm	3/32"	5/16"	J
200-CT-3A	3/8"	1/8"	5/16"	J
200-CT-3BA	1/2"	1/8"	5/16"	J
200-CT-3.5A	10mm	9/64"	5/16"	J
200-CT-4A	10mm	5/32"	5/16"	J
200-CT-4.5A	7/16"	11/64"	5/16"	J
200-CT-5A	7/16"	3/16"	3/8"	J
200-CT-5BA	1/2"	3/16"	3/8"	J
200-CT-6A	1/2"	6mm	3/8"	J



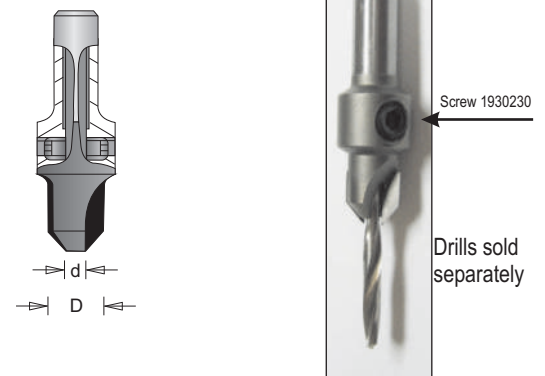
Countersink Only ("NEW" 200-CT)

DIMAR Carbide Tipped Countersinks are made of our top quality NOVA™ Industrial grade carbide. Each countersink has two flutes made of large size carbide designed to fit our unique Depth-Stop tool. You may use it with or without our Depth-Stop.

The countersink may accept regular jobber drills, or the preferred tapered drills. However, we highly recommend using our newly developed "slow spiral" drills for best performance.

Note: Depth-Stop will work strictly with our 200-CT countersinks.

Tool no.	D	d	Shank	Category
200-CT-2.5	8.5mm	3/32"	5/16"	J
200-CT-3	3/8"	1/8"	5/16"	J
200-CT-3B	1/2"	1/8"	5/16"	J
200-CT-3.5	10mm	9/64"	5/16"	J
200-CT-4	10mm	5/32"	5/16"	J
200-CT-4.5	7/16"	11/64"	5/16"	J
200-CT-5	7/16"	3/16"	3/8"	J
200-CT-5B	1/2"	3/16"	3/8"	J
200-CT-6	1/2"	6mm	3/8"	J



Spiral Drill – Slow spiral/helix

"Slow Spiral" drills also known as "low helix" drills have elongated flutes - smaller helix angle than conventional drills. Our drills have a helix angle of 13-15 degrees (about half of the angle of conventional drills). This feature enables faster removal of the chips while drilling. As a result, drilling is easier and the drilling feed may be increased.

A low helix drill is very useful in high feed rate applications under low spindle speeds, where removal of a large volume of chips is required. This is the case when we drill small diameter holes in most hand held drill machines, which cannot run in high RPM.

We highly recommend our Slow Spiral drills for hard materials, plastics and laminated materials.

Tool no.	Diameter	Length	Category
TDS-3/32	3/32"	57mm	D
TDS-1/8	1/8"	65mm	D
TDS-9/64	9/64"	70mm	D
TDS-5/32	5/32"	75mm	D
TDS-11/64	11/64"	75mm	D
TDS-3/16	3/16"	75mm	D
TDS-6	6mm	75mm	D



Depth-Stop

Tool no.	Depth Stop for	Category
200-DSA	200-CT-2.5A→200-CT4A	J
200-DSB	200-CT-4.5A→200-CT-6A	J

Unique design of a Low Friction Depth-Stop that fits perfectly onto our top quality NOVA™ Industrial grade carbide tipped countersinks (200-CT).

Fitted with a collar made from a special grade of polymer material with non-stick characteristics, our Depth-Stop will spin smoothly around the stopper, similar to a bearing, to ensure precise depth of countersinking without marring or scratching the surface of the material.

Note: Depth-Stop will work strictly with our 200-CT countersinks.

